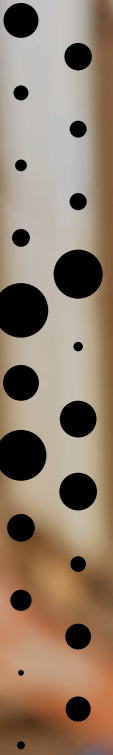


HEALTH, SAFETY & ENVIRONMENT TRAINING

makeuk.org/ehstraining



WHY MAKE UK

Safe, healthy and sustainable organisations are good for people, good for business and good for the world. That's why we are dedicated to improving EHS knowledge and performance in individuals and companies across the UK.

- **Quality** – courses endorsed by external industry bodies and pass rates which regularly exceed national averages.
- **Trust** – the very first NEBOSH training partner and the only provider of the IEMA Diploma in the world.
- **Experience** – deliver more than 10,000 training and consultancy days each year.
- **Flexible** – a range of delivery methods to complement the learning style of your organisation and its individuals.
- **Extensive** – training solutions designed for a single delegate through to company-wide programmes. For professional development or to drive the Health & Safety agenda in your organisation.
- **Impactful** – innovative tools and solutions to ensure effective training.
- **Expertise** – trainers are professional consultants with industry recognised qualifications and practical experience.

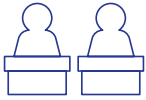
Rated
Excellent



“The Make UK trainers were brilliant. They were very knowledgeable and could keep the delegates listening. Sometimes Health and Safety can be a dry subject but they managed to put it across in an easily understandable and enthusiastic manner, which had a big influence on the outcome.”

HSE Advisor, CANPACK UK Ltd

DELIVERY METHODS



Classroom

Taught with delegates from other organisations at one of our training centres, this rich learning experience allows you to get away from the distractions of the workplace, learn from your peers and focus on your qualification.



Virtual Classroom

For those who want a classroom-based course without the travel, our virtual classrooms provide an interactive online environment for our training programmes to be delivered at your home or office.



eLearning

E-learning programmes that can be studied at any time, from anywhere, from any device. This method provides the flexibility for you to study at your own pace and in your own learning style.



eLearning Extra

Provides all the features and flexibility of an eLearning course, but with the structured support of that a tutor provides via a series of scheduled webinars.



POPULAR OFF-THE-SHELF TRAINING COURSES

The following are our popular off-the-shelf training courses.



Course	Classroom	Virtual Classroom	eLearning	eLearning Extra
NEBOSH				
NEBOSH National Diploma for Occupational Health and Safety Management Professionals	Y	N	Y	Y
NEBOSH National General Certificate in Occupational Health and Safety	Y	Y	Y	Y
IOSH				
IOSH Managing Safely	Y	Y	Y	N
IOSH Leading Safely	Y	Y	N	N
IEMA				
IEMA Pathways to Net Zero	N	Y	N	N
IEMA Foundation Certificate in Environmental Management (AIEMA)	Y	Y	Y	Y
IEMA Certificate in Environmental Management (PIEMA)	Y	N	Y	Y
IEMA Diplomain Sustainable Business Practice	Y	N	N	N

POPULAR OFF-THE-SHELF TRAINING COURSES



Course	Classroom	Virtual Classroom	eLearning	eLearning Extra
ISO				
ISO 45001 - Lead Auditor - CQI/IRCA Certified	Y	N	N	N
ISO 45001 - Internal Auditor - CQI/IRCA Certified	Y	N	N	N
OTHER				
Mental Health First Aid Champion	Y	N	N	N
Mental Health First Aider	N	Y	N	N
IOA Certificate in Workplace Noise Assessments	Y	N	N	N
Construction, Design and Management (CDM 2015)	N	Y	N	N
COSHH Made Simple	N	Y	N	N
Legionella Awareness	N	Y	N	N

ELEARNING



eLearning is short for electronic learning. Sometimes called Online, eLearning programmes are a convenient, flexible and cost effective way to study. Learners can study the course at their own pace, allowing them to fit their study around their busy schedule. Our Learner Management System will help track progress and if learners have questions they are able to email a Make UK tutor.

The following courses are currently only available via eLearning.

We can provide bulk eLearning packages. If you're interested in training for more than 10 people, please contact us.

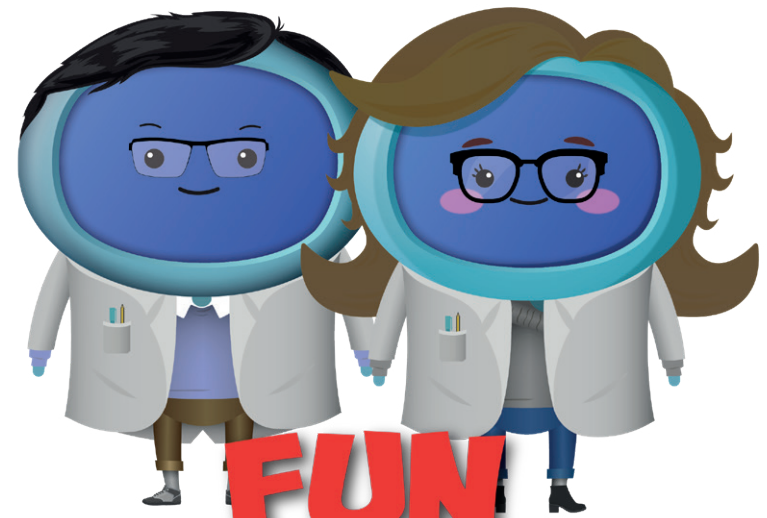
Course
NEBOSH
NEBOSH HSE Award in Managing Risks and Risk Assessment at Work
NEBOSH Award in Health and Safety at Work
NEBOSH Health and Safety Management for Construction
NEBOSH HSE Introduction to Incident Investigation
IOSH
IOSH Working Safely
Introduction to Net Zero
IEMA
IEMA Environmental Sustainability Skills for Managers
IEMA Sustainability Skills for the Workforce

Course
OTHER
Mental Health Awareness
Supporting Your Staff Through Mental Health
Asbestos Awareness
Manual Handling in the Workplace
Working at Heights
Risk Assessment 'What you need to know'
Slips, Trips and Falls in the Workplace
Awareness of Health and Safety at Work
Risk Assessment in the Workplace
Fire Safety
Display Screen and Workstation Assessment
Moving Loads by Lifting and Slinging
Level 1 Food Safety and Hygiene
Level 2 Food Safety and Hygiene
Level 3 Food Safety and Hygiene for Supervisors
An overview of COSHH
CDM 2015 in Practice

FUN BITESIZED TRAINING

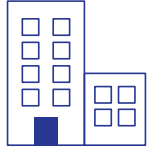
In partnership with iAm Learning, Make UK are proud to present 300+ engaging animated eLearning courses.

- Storytelling, animation and interactivity brings content to life
- Because it's eLearning courses can be completed at anytime and anywhere
- Courses only take between 2 and 15 minutes to complete
- IOSH and CPD accredited
- Cover safeguarding, cyber security, compliance, as well as health and safety, and much much more!
- Use your own Learner Management System (LMS) or ours



FUN BITESIZED TRAINING

IN-COMPANY



In-company training is provided for a group of people from your organisation at a time to suit you. Additionally, you can choose the delivery method; whether this is face-to face, at your office or offsite (perhaps at one of Make UK's venues?), virtually, or via eLearning, where applicable.

All of our standard courses can be delivered in-company with the following courses only available via this route.

Course
IOSH
IOSH Managing Occupational Health and Wellbeing
IOSH Managing Safely Refresher
IEMA
IEMA Environmental Awareness
Leading with Environmental Sustainability
ISO
ISO 9001: Internal Auditor - CQI/IRCA Certified
ISO 9001: Lead Auditor - CQI/IRCA Certified
ISO 45001: 2018 Foundation Course - CQI/IRCA Certified

Course
OTHER
Accident Investigation
Business Continuity and Emergency Planning
ATEX & DSEAR Awareness
Managing Contractors
Managing Stress at Work
Waste Management
Machinery Safety
Influencing Health and Safety Culture and Behaviour

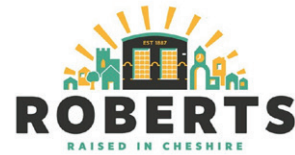
BESPOKE PROGRAMMES

Sometimes an off-the-shelf course might not provide the tailored solution your organisation needs. Our team of experts will work with you to develop a bespoke programme that focuses the learning outcome on your specific requirements.

By embedding your organisation's values, competencies and working practices training has great impact, consistency and immediate relevance. The delivery method can be matched to suit your people and we can even incorporate your company's own Learner Management System, if required.

THE BENEFITS

- Cost effective
- Time efficient
- Flexible
- Accessible
- Relevant
- Learner focused
- Adaptable



CASE STUDY

In 2021, Make UK worked with Roberts Bakery with the aim of getting employees to take more ownership of their health and safety responsibilities. After taking time to thoroughly understand the current position, requirements and desired outputs, Make UK delivered a tailored IOSH Managing Safely to over 30 staff members.

To suit Roberts Bakery, the three-day course was run one-day per week over a three-week period and was tailored to bring the content to life, including existing policies, risk assessments, accident investigation processes, and real-life examples of incidents. The impact was quickly evident – a reduction in lost time incidents, improved synergy and greater engagement with health and safety.

A consistent message was required through the training program and we thought Make UK would be a great partner to help us achieve this - with their industry knowledge they could really bring the topic to life.

Martin Bratherton, Head of HSE, Roberts Bakery

GAME-BASED LEARNING

Integrating games into your training programme is an innovative, fun and rewarding route to engaging your workforce – turning what some may see as a dry topic into the talk of the shop floor.

Supported by the well-known quote “Tell me and I forget, show me and I remember, involve me and I understand”, gamification follows educational theory that we learn by doing.

All of our game-based learning solutions are tailored to your organisation’s specific requirements.

Please contact us to discuss your specific requirements.

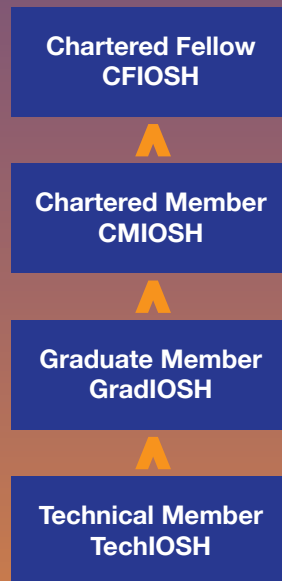


SUPPORTING YOUR PROFESSIONAL DEVELOPMENT JOURNEY

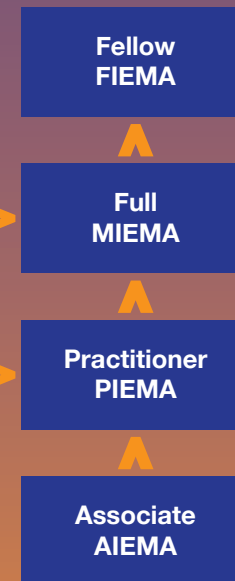
For those making health and safety or sustainability their career, Make UK can support you on your professional development journey. We take time to understand your goals offering expert guidance to help you on your professional development journey, which doesn't end when you pass. In fact, when you undertake EHS training with us, course completion is just the beginning.

- Partners with IOSH and IEMA from the very beginning
- Tutors have completed the IOSH and / or IEMA pathways themselves
- Deliver more than 10,000 training days per year

Health and safety journey



Sustainability journey



This level and above for organisations wanting to go beyond compliance

The level at which most organisations deem a practitioner competent

**TO FIND OUT MORE ABOUT SPECIFIC
COURSES OR IF YOU CAN'T FIND
WHAT YOU ARE LOOKING FOR
PLEASE GET IN TOUCH.**

Email: enquiries@makeuk.org

Call: 0808 168 5874